

FLAG SHIP

Y A C H T S



XIPHIAS

| | | |
|---------------|-------------------|------------------|
| TYPE | ESTEREL 33M | |
| BUILDER | ESTEREL | |
| YEAR | 1974 | |
| FLAG | GREEK | |
| DIMENSIONS | LOA | 33,20m(108,90ft) |
| | Beam | 6,20m(20,34ft) |
| | Draft | 2,00m(6,56ft) |
| CONSTRUCTION | Hull | WOOD |
| | Superstructure | WOOD |
| SPEED | Cruising | 15 KNOTS |
| | Max | 22 KNOTS |
| ACCOMMODATION | Guests | FOR 8 GUESTS |
| | Crew | 7 |
| MACHINERY | 2 X 1.350 BHP MTU | |
| LYING | ATHENS, GREECE | |
| PRICE | €600.000 VAT PAID | |

CONSTRUCTION

| | |
|----------------|---------|
| DECKS | In Teak |
| HULL | Wood |
| SUPERSTRUCTURE | Wood |

MAIN CHARACTERISTICS

| | |
|-------------------|---|
| BUILDER | Esterel, France |
| DESIGNER | Exterior Designer: Jon Bannenberg Naval Architect: Andre Mauric Interior Designer: Gabhan O'keefe |
| YEAR | 1974 Refitted in 2008 and 2009 |
| CLASSIFICATION | Hellenic Registry |
| L.O.A | 33.20 mtrs |
| BEAM | 6.20 mtrs |
| DRAFT | 2 mtrs |
| DRAFT (FULL LOAD) | 2.60 mtrs |
| GROSS TONNAGE | 40 tons |
| DISPLACEMENT | 85 tons |
| MAX. SPEED | 22 knots |
| CRUISING SPEED | 15 knots |
| CRUISING RANGE | 600 nm @ 15-17 knots |
| CONSUMPTION | 160 Ltrs/hr |
| FUEL CAPACITY | 10,000 Ltrs |
| WATER CAPACITY | 4,000 Ltrs |
| BLACK WATER | Yes |
| DIRTY LUBE OIL | Yes |

MACHINERY

| | |
|------------------|---|
| ENGINES | 2 x 1.350 BHP MTU |
| ENGINE HOURS | 26 January 2017: Port: 4.796 hrs Starboard: 3.463 hrs |
| GENERATORS | 2 x 45 kW Onan |
| GENERATOR HOURS | 26 January 2017: Port: 5.296 Starboard: 5.419 |
| AIR CONDITIONING | 1 x Central unit 180.000 BTU |
| BATTERIES | 12 in two banks |
| BILGE SYSTEM | Yes |

| | |
|-----------------|------------------------|
| DESALINATOR | 200 Ltrs/hr |
| ELECTRICITY | 220 A/C |
| GEAR BOX | Yes |
| PROPELLERS | 2 x 4-blade propellers |
| PUMPS | Yes |
| SEWAGE SYSTEM | Yes |
| SHAFTS | 1 x Spare shaft |
| SHORE POWER | Yes |
| STABILIZERS | Yes |
| STEERING SYSTEM | Yes |
| TOILET SYSTEM | Electric toilet system |
| WATERMAKER | 4,800 Ltrs/day |

ACCOMMODATION

| | |
|---------------|---|
| MASTER CABIN | One Master cabin with double bed, walk-in closet, and ensuite facilities Also cabin is equipped with TV, Nova |
| VIP CABIN | One twin VIP cabin with closet and ensuite facilities Also cabin is equipped with TV |
| GUEST'S CABIN | Two twin Guest cabins located on the lower deck, each with ensuite facilities |
| CREW CABIN | One Captain's cabin with single bed and shared facilities One twin crew cabin One crew cabin with four single beds and ensuite facilities |
| SALOON | On the main deck there is the main saloon with bar, TV, DVD & Hi-Fi, card table and dining area seating up to 6 people |

GALLEY EQUIPMENT

| | |
|----------------|---|
| COFFEE MAKER | Yes |
| COOKER | Gaggenau cooker with 4 ceramic plates (new) |
| DEEP FREEZER | 2 x Deep freezers |
| DISHWASHER | Siemens dishwasher |
| FAN EXTRACTOR | Yes |
| FREEZER | 2 x Freezers |
| FRIDGE | 1 freeze at aft deck |
| FRIDGE/FREEZER | 1 x General Electric fridge/freezer |
| MICROWAVE | Yes |
| OVEN | Neff oven with grill (new) |
| REFRIGERATOR | Yes |
| ICE MAKER | 1 x Ice maker at aft deck |

LAUNDRY EQUIPMENT

| | |
|-----------------|-----------------------------|
| IRON | 1 x Siemens dryer |
| WASHING MACHINE | 1 x Siemens washing machine |

COMMUNICATION EQUIPMENT

| | |
|---------------|------------------------|
| GMDSS | Yes |
| INTERCOM | Yes |
| SATCOM SYSTEM | Satcom KVH NOVA |
| TELEPHONE | GSM & SAT phone |
| VHF | 1 x Sailor 1 x Icom |

NAVIGATION EQUIPMENT

| | |
|---------------|---|
| AUTOPILOT | AP 3003 Gold Navicontrol |
| DEPTHSOUNDER | Furuno Color FCV-612 new |
| GPS - PLOTTER | 1 x Geonav 11 Flash Color new 1 x Navionics charts |
| GYROCOMPASS | Ritchie gyrocompass |
| NAVTEX | Yes |
| RADAR | Furuno 48 nm radar |
| SPEEDLOG | Yes |
| VDO | Yes |

ENTERTAINMENT EQUIPMENT

| | |
|-----------------|--|
| CASSETTE PLAYER | State of the art entertainment system upgraded to the following: SAT TV, LCD TV, DVD and sound system in saloon, dining room, Master cabin and upper deck cabin. Sound system installed at all external areas. |
|-----------------|--|

TENDERS & TOYS

| | |
|------------|---|
| TENDER | 1 x Novamarine 440 with Yamaha 60 hp |
| WATER- SKI | Yes Banana, kayak, snorkeling equipment, tubes |

DECK EQUIPMENT

| | |
|---------------|------------------------------|
| ANCHOR | 2 x Anchors |
| CAPSTANS | 1 x Tender capstan |
| DAVITS/CRANES | Aft davit |
| GANGWAY | Yes |
| PASSARELLE | Electro-hydraulic passerelle |

WINCH 2 x Aft winches
2 x Foreside

WINDLASS Yes

SAFETY EQUIPMENT

FIRE FIGHTING In engine room
FIRE EXTINGUISHERS 20 x Fire extinguishers
LIFE JACKETS 20 x SOLAS life jackets
LIFE RAFT 2 x 24-person SOLAS life rafts
LIFE RINGS Yes
SAFES Yes
SECURITY SYSTEM CCTV

OTHER EQUIPMENT

COMPUTER Yes
PHOTOCOPIER Yes
PRINTER Yes

REMARKS

2014 New Hull exterior paint job
2015 New Superstructure paint job, new silk carpets in the main lounge and dining room
2016 Port generator overhauling at 5.300 hrs

Xiphias is one of the best yacht built by "Chantier Naval de l'Esterel" among a production of over 185 patrol boats and yachts delivered in 24 different countries. Her deep V hull lines provide excellent seakeeping and a minimum of speed reduction in heavy weather. In 2008, Xiphias was fully refitted and redecorated in a minimalist and modern interior style.



Saloon



Saloon b



Saloon c



Dining



Upper Saloon



Upper Saloon b



Master cabin



Master cabin b



Master wardrobe



Master ensuite



Twin Guest cabin



Galley



Aft deck



Aft deck b



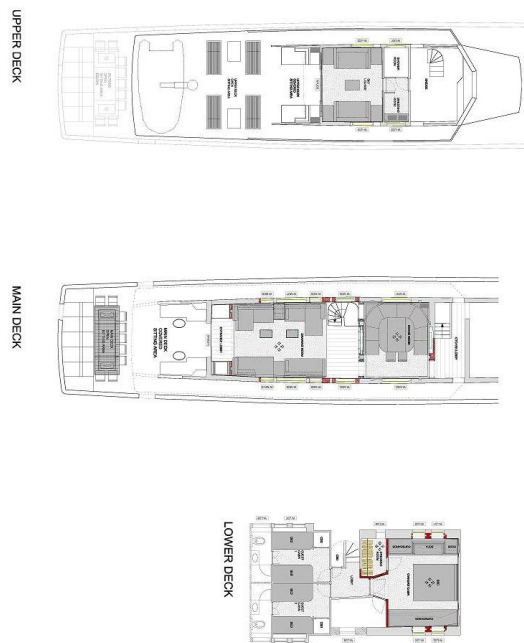
Upper deck



Upper deck b



Bow View



Layout

THE COMPANY OFFERS THE DETAILS OF THIS VESSEL IN GOOD FAITH BUT CANNOT GUARANTEE OR WARRANT THE ACCURACY OF THIS INFORMATION NOR WARRANT THE CONDITION OF THE VESSEL. A BUYER SHOULD INSTRUCT HIS AGENTS, OR HIS SURVEYORS, TO INVESTIGATE SUCH DETAILS AS THE BUYER DESIRES VALIDATED. THIS VESSEL IS OFFERED SUBJECT TO PRIOR SALE, PRICE CHANGE, OR WITHDRAWAL WITHOUT NOTICE.
