

Refno: 3056

**BILLA**



|                     |                              |  |
|---------------------|------------------------------|--|
| <b>TYPE</b>         |                              | ADMIRAL 42M  |
| <b>BUILDER</b>      |                              | CANTIERI NAVALI LAVAGNA                            |
| <b>YEAR</b>         |                              | 2009   |
| <b>FLAG</b>         |                              | GREEK  |
| <b>DIMENSIONS</b>   | Length O.A.<br>Beam<br>Draft | 137,76 (42,00 m)<br>27,88 (8,5 m)<br>5,74 (1,75 m) |
| <b>CONSTRUCTION</b> | Hull<br>Superstructure       | ALUMINIUM<br>ALUMINIUM                             |
| <b>ACCOMODATION</b> |                              | FOR 11 GUESTS                                      |
| <b>MACHINERY</b>    |                              | 2 X 3650 BHP MTU                                   |
| <b>SPEED</b>        | Cruising<br>Max              | 26 KNOTS<br>31 KNOTS                               |
| <b>LYING</b>        |                              | GREECE   |
| <b>PRICE</b>        |                              | € 8.950.000 VAT PAID                               |

## CONSTRUCTION

|                       |           |
|-----------------------|-----------|
| <b>DECKS</b>          | Teak      |
| <b>HULL</b>           | Aluminium |
| <b>SUPERSTRUCTURE</b> | Aluminium |

## MAIN CHARACTERISTICS

|                       |  |
|-----------------------|--|
| <b>TYPE</b>           | Admiral 42 M<br>Hull No C122           |
| <b>BUILDER</b>        | Cantieri Navali Lavagna                |
| <b>DESIGNER</b>       | Luca Dini Interior Designer            |
| <b>YEAR</b>           | 2009                                   |
| <b>CLASSIFICATION</b> | Maltese Cross A1 CYS AMS certification |
| <b>L.O.A</b>          | 42 mtrs \ 137,76 ft                    |
| <b>BEAM</b>           | 8.5 mtrs / 27.9 ft                     |
| <b>DRAFT</b>          | 1.75 mtrs / 5.7 ft                     |
| <b>DISPLACEMENT</b>   | 174 Tons                               |
| <b>MAX. SPEED</b>     | 31 Knots                               |
| <b>CRUISING SPEED</b> | 26 Knots                               |
| <b>CRUISING RANGE</b> | 800 nm @ cruising speed                |
| <b>CONSUMPTION</b>    | 1300 Ltrs / hr                         |
| <b>FUEL CAPACITY</b>  | 30.000 Ltrs                            |
| <b>WATER CAPACITY</b> | 5.000 Ltrs                             |
| <b>BLACK WATER</b>    | 1.000 Ltrs                             |
| <b>LUBE OIL</b>       | 500 Ltrs                               |

## MACHINERY

|                         |   |
|-------------------------|---|
| <b>REDUCTION GEAR</b>   | 2 x ZF 7550 V   |
| <b>WATERMAKER</b>       | Idromer 270ltr\1hr  |
| <b>TRIM TABS</b>        | Yes   |
| <b>TOILET SYSTEM</b>    | Electric  |
| <b>INVERTER</b>         | Mastervolt  |
| <b>BOW THRUSTER</b>     | Genoa hydro systems   |
| <b>BOILER</b>           | 3 x 100 Ltrs each   |
| <b>BATTERIES</b>        | mastervolt chargemaster auto charger                                    |
| <b>AIR CONDITIONING</b> | Frigit 280.000 BTU  |
| <b>ENGINES</b>          | 2 x 3.650 BHP MTU   |
| <b>ENGINE HOURS</b>     | Port: 807 hours (20 April 2015)<br>Starboard: 807 hours (20 April 2015) |
| <b>GENERATORS</b>       | 2 x 50 KWA Kohler + 1 x 27 KWA kohler in parallel                       |
| <b>GENERATOR HOURS</b>  | Port: 4.100 (20 April 2015)<br>Starboard: 4.100 (20 April 2015)         |

## ACCOMMODATION

|                      |  |
|----------------------|--|
| <b>MASTER CABIN</b>  | One Master cabin located on the main deck with ensuite facilities and walk in cabinet.                         |
| <b>VIP CABIN</b>     | Two VIP cabins wth double bed and ensuite facilities   |
| <b>GUEST'S CABIN</b> | One Twin Guest cabins with ensuite facilites<br>One Twin Guest cabin with 1 pullman bed and ensuite facilities |
| <b>CREW CABIN</b>    | Three cabins for 6 members   |

## GALLEY EQUIPMENT

|                       |  |
|-----------------------|--|
| <b>COFFEE MAKER</b>   | Miele  |
| <b>COOKER</b>         | 1 X Miele 2 plates ceramic in pantry<br>1 X Gaggenau 5 plates in galley.                                 |
| <b>DISHWASHER</b>     | 1 x Miele in Pantry<br>1 x Miele in galley.  |
| <b>FAN EXTRACTOR</b>  | 1 x Miele in pantry<br>1 x Gaggenau in galley.   |
| <b>FREEZER</b>        | 1 x Crewmess   |
| <b>FRIDGE/FREEZER</b> | 2 x Inox fridge\freezer in galley  |
| <b>GRILL</b>          | 1 x Gaggenau in galley<br>1 x Gaggenau on Flybridge  |
| <b>MICROWAVE</b>      | 1 x Miele in galley  |
| <b>WINE COOLER</b>    | 1 x wine cooler Miele in pantry  |
| <b>ICE MAKER</b>      | 1 x icemaker on flybridge<br>1 x icemaker in pantry  |
| <b>MINI BAR</b>       | In Saloon  |
| <b>OVEN</b>           | 1 x Gaggenau in galley<br>1 x Neff in galley   |
| <b>REFRIGERATOR</b>   | 1 x mini bar in saloon<br>1 x fridge in pantry<br>1 x fridge in crewmess<br>1 in swimming platform area. |
| <b>STOVE</b>          | 1 x Miele  |

## LAUNDRY EQUIPMENT

|                        |  |
|------------------------|--|
| <b>WASHING MACHINE</b> | 2 x Miele washing machines with dryers |
|------------------------|--|

## COMMU/TION EQUIPMENT

|                      |   |
|----------------------|---|
| <b>FAX</b>           | 1 x fax machine   |
| <b>VHF</b>           | 1 x Furuno handset<br>1 x Sailor Thrane & Thrane<br>1 x Furuno Distress<br>1 x Furuno Nevnet 3D |
| <b>TELEPHONE</b>     | Furuno Setter   |
| <b>SATCOM SYSTEM</b> | Seatel T.V  |
| <b>SSB</b>           | Furuno  |
| <b>INTERCOM</b>      | Yes   |

## NAVIGATION EQUIPMENT

|                    |                                  |
|--------------------|----------------------------------|
| <b>AUTOPILOT</b>   | Furuno FCV 585 + 1 x Searel AP50 |
| <b>DEPTHFINDER</b> | Furuno F1-30                     |
| <b>COMPASS</b>     | 1 x Furuno F1-30                 |
| <b>DEPTHMETER</b>  | Furuno F1-30 Multi-Control       |
| <b>DEPTHSONDER</b> | Furuno F1-30 Multi-Control       |
| <b>ECHOSOUNDER</b> | Furuno F1-30 Multi-Control       |
| <b>RADAR</b>       | 1 x Lorenz Magnum Plus           |
| <b>SEARCHLIGHT</b> | Electric                         |
| <b>SPEEDLOG</b>    | Furuno F1-30                     |

|                    |                             |
|--------------------|-----------------------------|
| <b>SPEEDMETER</b>  | Furuno F1-30                |
| <b>PLOTTER</b>     | Furuno                      |
| <b>NAVTEX</b>      | Furuno NX-700               |
| <b>GYROCOMPASS</b> | 1 x Simrad AR 80            |
| <b>GPS-PLOTTER</b> | Furuno GP-150               |
| <b>GPS</b>         | Furuno GPS Navi GP-150      |
|                    | 1 x Furuno M\C              |
| <b>WEATHERFAX</b>  | Yes                         |
|                    | 1 x Bowthrust Control       |
|                    | 1 x Furuno FA-150 Universal |
|                    | 1 x Sailor battery panel    |

### ENTERTAINMENT

|                      |   |
|----------------------|---|
| <b>TV</b>            | 1 x Sharp 40" in saloon<br>1 x 30" Sharp in master cabin<br>4 x 17" in all guest cabins<br>3 x 14" in all crew cabins<br>1 x 14" in crew mess |
| <b>STEREO SYSTEM</b> | 1 x Bose control surround sound system in saloon  |
| <b>DVD</b>           | 1 x Samsung in saloon + 5 x Sony in all cabins  |
| <b>CD</b>            | 9 x CD\Radio players in all guest + crew cabins and in galley   |

### TENDERS & TOYS

|                |                               |
|----------------|-------------------------------|
| <b>JET SKI</b> | Yes                           |
| <b>TENDER</b>  | Dariel with mercruiser 11slip |

### DECK EQUIPMENT

|                       |  |
|-----------------------|--|
| <b>WINDLASS</b>       | 2 x Maxwell 4000 aft + 2 x anchor windlasses heavy duty                  |
| <b>STERN PLATFORM</b> | Opening stern platform in teak with recreational area                    |
| <b>PASSARELLE</b>     | Electrohydraulic   |
| <b>ANCHOR</b>         | 2 x anchors  |
| <b>DAVITS/CRANES</b>  | 1 x crane for tender + 1 x crane for jetski bow + 1 x crane on flybridge |
| <b>BIMINI TOP</b>     | Yes  |

### SAFETY EQUIPMENT

|                      |                 |
|----------------------|-----------------|
| <b>LIFE RAFT</b>     | 4 x 8 man rafts |
| <b>FIRE FIGHTING</b> | Yes             |
| <b>LIFE JACKETS</b>  | Full Set        |

### NOTE

The Company offers the details of this vessel in good faith but cannot guarantee or warrant the accuracy of this information nor warrant the condition of the vessel.  
A buyer should instruct his agents, or his surveyors, to investigate such details as the buyer desires validated. This vessel is offered subject to prior sale, price change, or withdrawal without notice.



Saloon.JPG



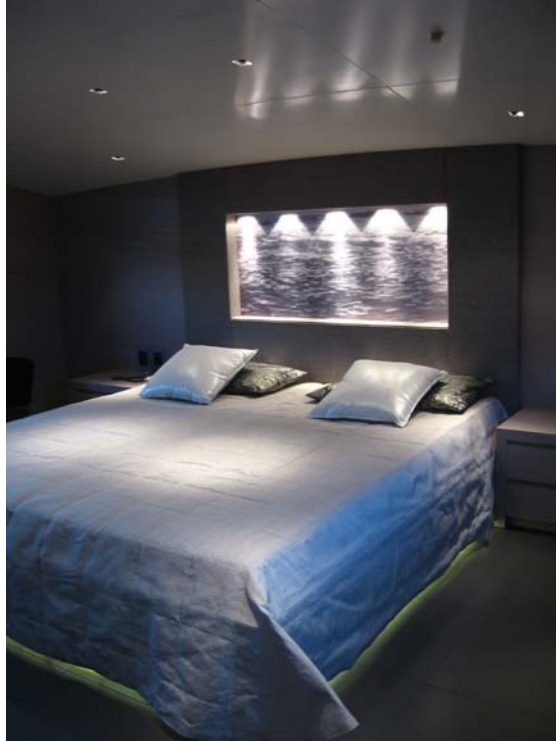
Dining.JPG



Corridor.jpg



Master cabin.jpg



Master cabin b.jpg



Master TV.jpg



Master ensuite.jpg



Master ensuite b.jpg





VIP cabin.jpg



Guest cabin.jpg



Guest cabin b.jpg



Guest ensuite.jpg



Stairs.jpg



Upper deck.jpg



Wheelhouse.jpg



Upper deck b.jpg



Upper deck c.JPG



Side view.jpg



Bow View-.JPG



Bow view 2-.JPG

# M/Y Blue Eyes

